

NHBC NEW HOME STATISTICS REVIEW

2018

NHBC statistics represent a unique source of detailed up-to-date information on new home construction and the house-building industry. The figures relate to new homes registered with NHBC for its ten-year warranty, which covers around 80 per cent of all new homes built in the UK.

NHBC figures are available well ahead of Government figures. As such, we represent the only source of up-to-date information on new home registrations.

159,617

new homes registered in 2018

117,497

new homes registered in the private sector in 2018

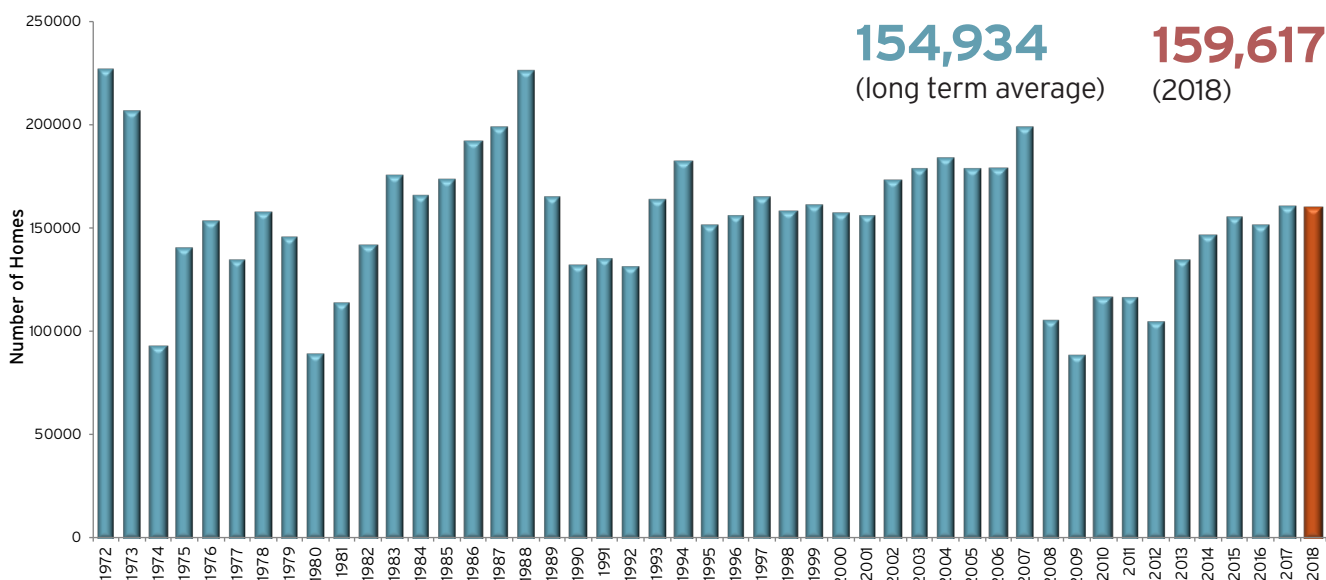
42,120

new homes registered in the affordable sector in 2018

149,480

new homes completed in 2018

NEW HOME REGISTRATION HISTORY



Source: NHBC (Appendix table 1)

2018 HEADLINE RESULTS

- **159,617** new homes registered in 2018, 0.5% down on 2017
- **8 out of 12** months showed a growth in registrations in 2018
- **117,497** new homes were registered in 2018 in the private sector, 1% down on 2017
- **42,120** new homes were registered in 2018 in the affordable sector, level with 2017
- **6 out of 12** regions experienced growth in registrations in 2018
- **149,480** new homes were completed in 2018, 1% up on 2017
- **11 out of 12** regions experienced growth in new home completions in 2018

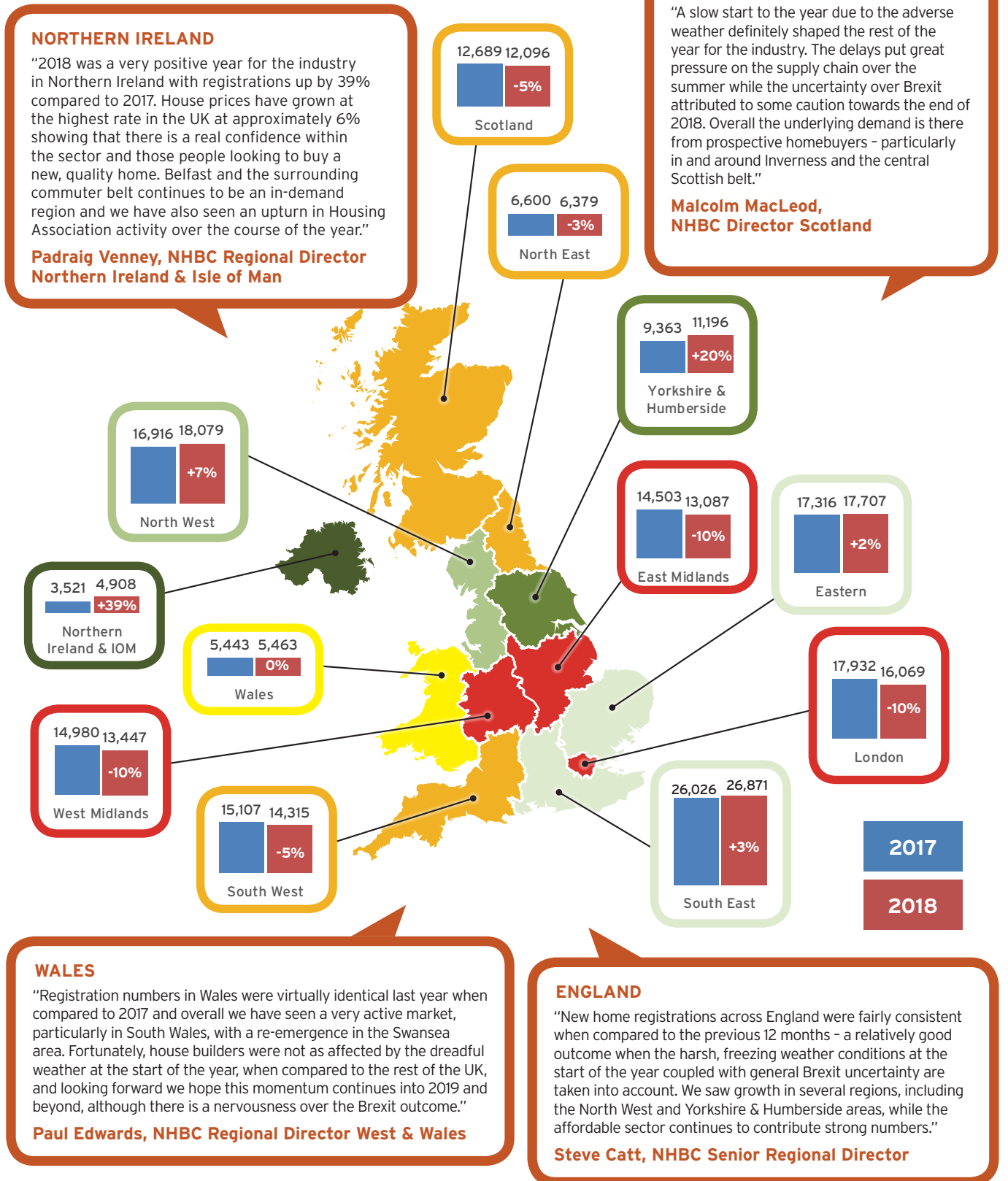


Raising Standards. Protecting Homeowners

If you would like an interview to discuss this in more detail or if you require any further information, please contact Lisa Brooks on 01908 746 734 or email lbrooks@nhbc.co.uk.

Regional overview

REGIONAL REGISTRATIONS - 2017 vs 2018

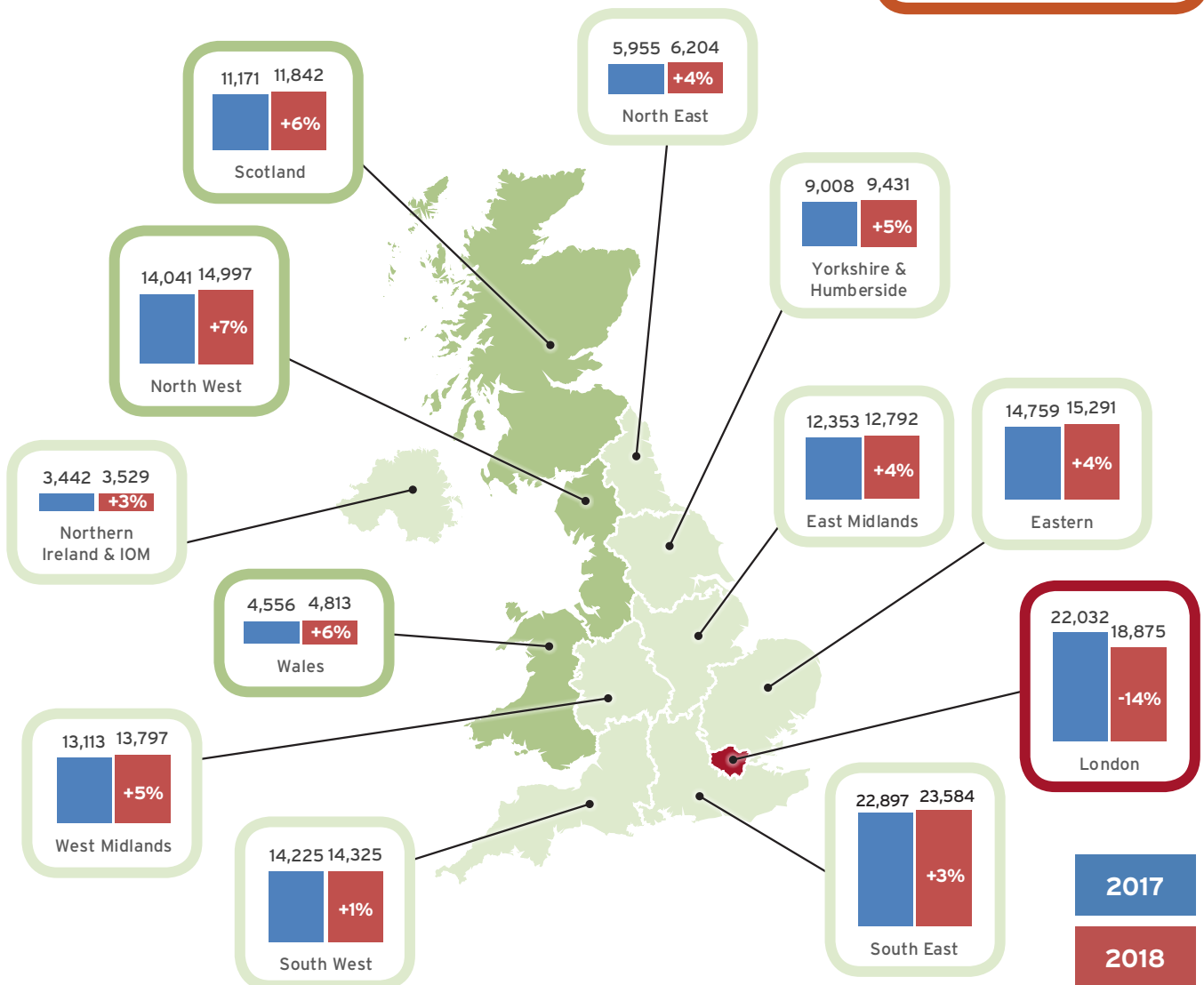


Source: NHBC (Appendix table 2)

Regional overview

REGIONAL COMPLETIONS - 2017 vs 2018

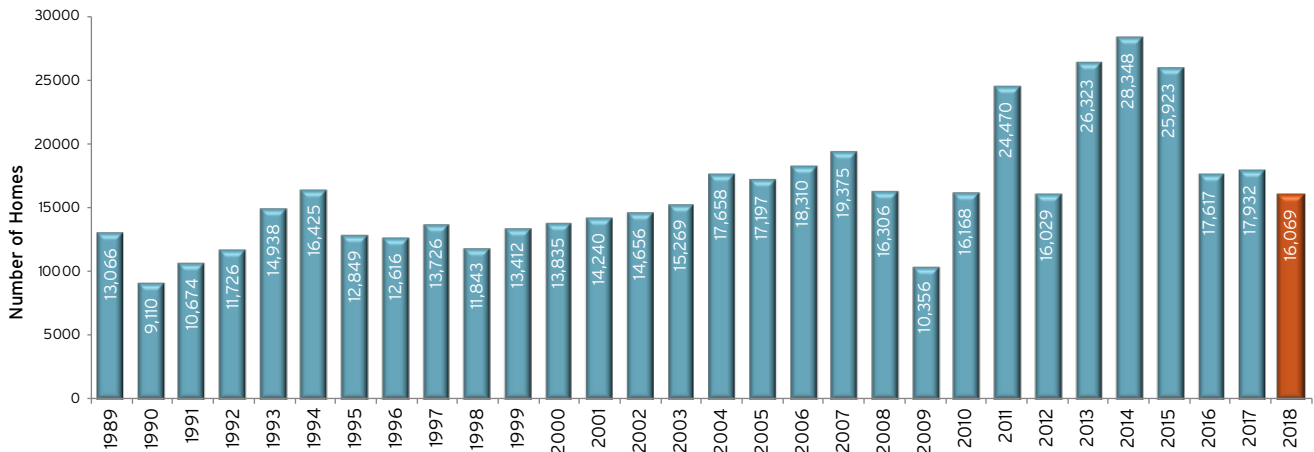
11 out of 12 regions experienced growth vs 2017



Source: NHBC (Appendix table 3)

Regional overview

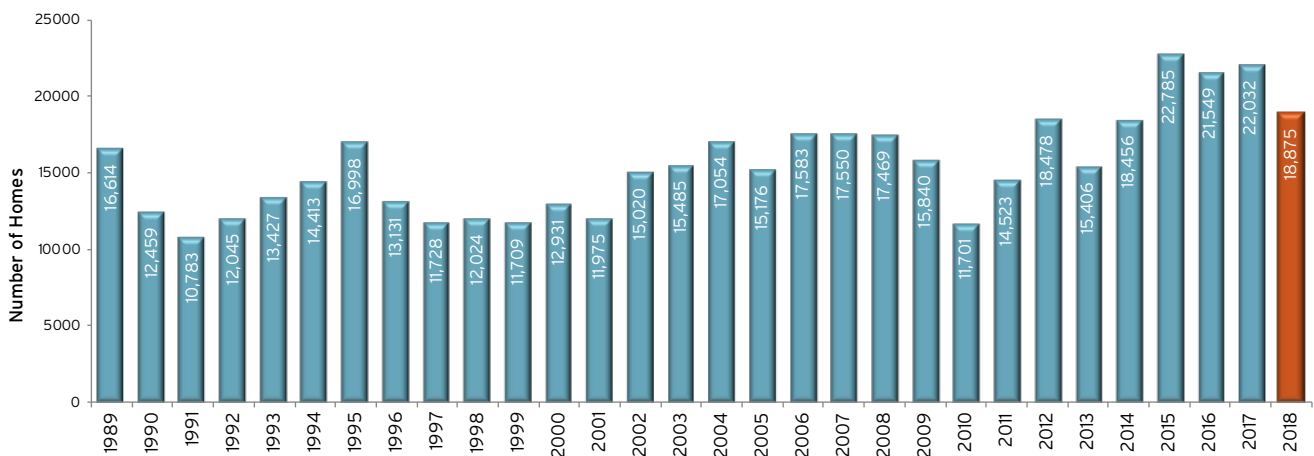
NEW HOMES REGISTERED IN LONDON



Source: NHBC (Appendix table 4)



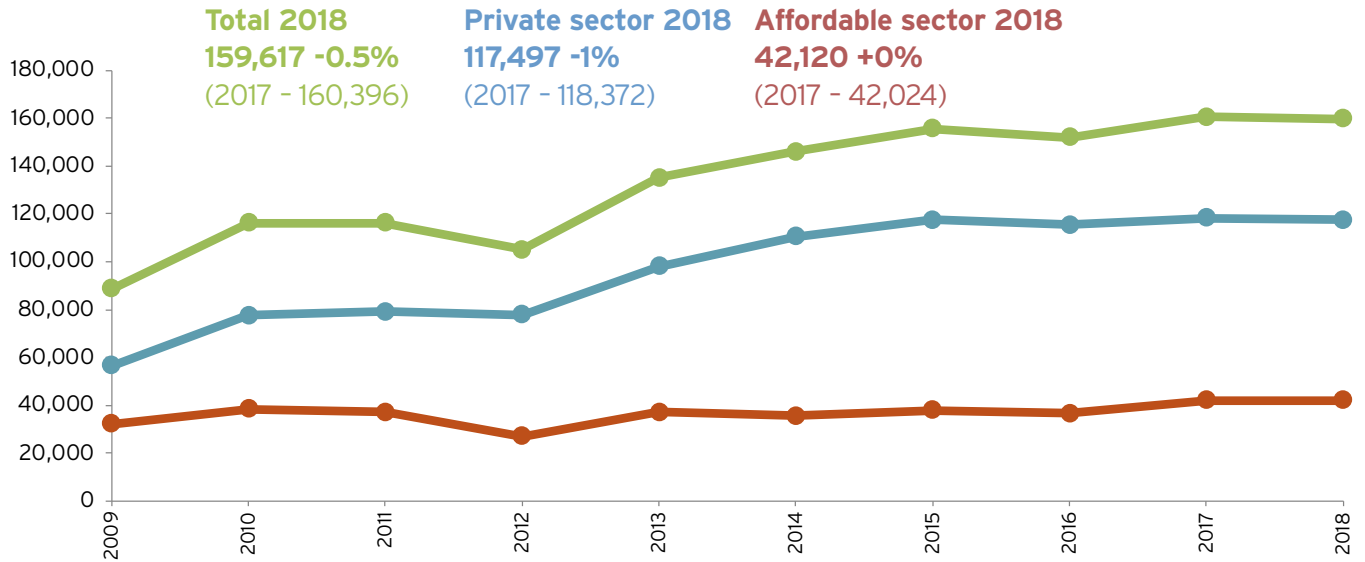
NEW HOMES COMPLETED IN LONDON



Source: NHBC (Appendix table 5)

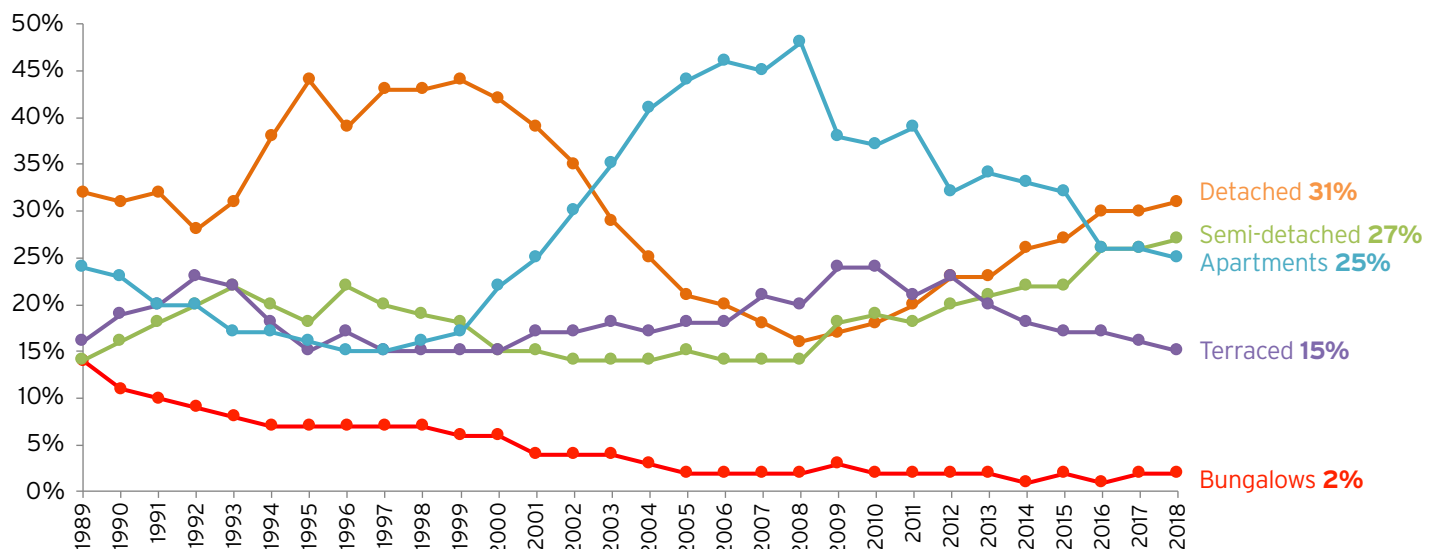
Analysis of new home registrations

NEW BUILD REGISTRATIONS - PRIVATE AND AFFORDABLE SECTOR



Source: NHBC (Appendix table 6)

UK HOUSE TYPES



Source: NHBC (Appendix table 7)

Appendices

TABLE 1: NEW HOME REGISTRATION HISTORY

YEAR	VOLUME	YEAR	VOLUME	YEAR	VOLUME	YEAR	VOLUME
1972	226,700	1984	165,600	1996	156,353	2008	105,424
1973	206,600	1985	173,300	1997	165,386	2009	88,860
1974	92,400	1986	191,600	1998	157,968	2010	116,146
1975	140,700	1987	199,098	1999	161,214	2011	116,315
1976	153,500	1988	226,285	2000	157,449	2012	104,949
1977	134,400	1989	164,962	2001	155,970	2013	135,043
1978	156,900	1990	131,905	2002	172,408	2014	146,075
1979	146,000	1991	135,638	2003	178,984	2015	155,576
1980	89,500	1992	131,671	2004	184,046	2016	151,876
1981	114,200	1993	163,906	2005	179,051	2017	160,396
1982	141,600	1994	181,517	2006	178,471	2018	159,617
1983	175,800	1995	151,779	2007	198,753		

NOTES

- 1) The figures show new build (and Solo for Self Build prior to October 2015) homes registered for NHBC's ten-year warranty
- 2) Nationally NHBC provides warranties on approximately 80% of new homes built in the UK (including the Isle of Man)
- 3) The figures are sourced from information held on NHBC's Fusion system as at 31st December 2018
- 4) Changes can occur between figures published at different times owing to changes in policies and cancellations

Appendices

TABLE 2: UK REGISTRATIONS BY REGION

Region / Country	2009	2010	2011	2012	2013	2014	2015	2016	2017	2018
NORTH EAST	2,806	4,542	3,245	3,972	5,223	5,318	5,802	6,173	6,600	6,379
NORTH WEST	6,533	8,394	8,173	8,724	11,239	11,630	13,543	15,132	16,916	18,079
YORKSHIRE & HUMBERSIDE	4,793	7,404	5,986	5,996	7,048	8,753	7,622	9,672	9,363	11,196
WEST MIDLANDS	5,759	8,910	8,037	7,916	10,725	12,458	13,548	13,230	14,980	13,447
EAST MIDLANDS	7,184	9,095	7,733	7,869	10,928	11,803	13,169	12,188	14,503	13,087
EASTERN	11,829	13,357	13,512	11,386	14,619	13,688	16,827	15,916	17,316	17,707
SOUTH WEST	10,869	13,158	11,570	11,761	13,717	14,334	15,784	16,429	15,107	14,315
LONDON	10,356	16,168	24,470	16,029	26,323	28,348	25,923	17,617	17,932	16,069
SOUTH EAST	15,431	19,509	18,891	16,946	19,422	21,323	22,838	26,159	26,026	26,871
SCOTLAND	6,846	8,219	9,079	8,409	10,122	11,120	12,676	11,542	12,689	12,096
WALES	2,889	4,221	3,556	4,139	3,546	4,794	4,627	4,573	5,443	5,463
NORTHERN IRELAND & IOM	3,565	3,169	2,063	1,802	2,131	2,506	3,217	3,245	3,521	4,908

NOTES

- 1) The figures show new build (and Solo for Self Build prior to October 2015) homes registered for NHBC's ten-year warranty
- 2) Nationally NHBC provides warranties on approximately 80% of new homes built in the UK (including the Isle of Man)
- 3) The figures are sourced from information held on NHBC's Fusion system as at 31st December 2018
- 4) Changes can occur between figures published at different times owing to changes in policies and cancellations

Appendices

TABLE 3: UK COMPLETIONS BY REGION

Region / Country	2009	2010	2011	2012	2013	2014	2015	2016	2017	2018
NORTH EAST	3,603	3,803	4,116	4,024	4,198	4,935	5,430	5,584	5,955	6,204
NORTH WEST	8,143	7,911	8,737	8,754	8,726	10,766	12,239	12,543	14,041	14,997
YORKSHIRE & HUMBERSIDE	6,336	6,405	7,630	6,072	6,353	6,928	7,902	8,351	9,008	9,431
WEST MIDLANDS	7,907	7,352	9,140	8,446	8,736	9,585	12,439	12,226	13,113	13,797
EAST MIDLANDS	8,929	8,767	8,953	8,040	8,122	10,267	11,786	12,568	12,353	12,792
EASTERN	13,349	13,100	13,466	13,251	12,484	12,891	13,701	14,368	14,759	15,291
SOUTH WEST	11,612	11,190	12,709	11,515	11,812	12,419	14,044	14,498	14,225	14,325
LONDON	15,840	11,701	14,523	18,478	15,406	18,456	22,785	21,549	22,032	18,875
SOUTH EAST	18,987	16,604	18,227	18,935	17,064	16,523	21,421	20,829	22,897	23,584
SCOTLAND	9,248	8,535	8,681	8,596	9,618	10,340	11,424	11,658	11,171	11,842
WALES	4,226	3,837	3,885	3,730	3,828	4,326	4,648	4,503	4,556	4,813
NORTHERN IRELAND & IOM	4,558	3,395	2,933	2,414	2,348	2,634	2,746	3,084	3,442	3,529

NOTES

- 1) The figures show new build (and Solo for Self Build homes prior to October 2015) completed for NHBC's ten-year warranty.
- 2) 'Completions' relate to the number of homes 'finalled' by NHBC Building Inspectors and changes can occur between figures published at different times.
- 3) The figures are sourced from information held on NHBC's Fusion system as at 31st December 2018.
- 4) Nationally NHBC provides warranties on approximately 80% of new homes built in the UK (including the Isle of Man).

Appendices

TABLE 4: NEW HOME REGISTRATIONS IN LONDON

YEAR	VOLUME	YEAR	VOLUME	YEAR	VOLUME
1989	13,066	1999	13,412	2009	10,356
1990	9,110	2000	13,835	2010	16,168
1991	10,674	2001	14,240	2011	24,470
1992	11,726	2002	14,656	2012	16,029
1993	14,938	2003	15,269	2013	26,323
1994	16,425	2004	17,658	2014	28,348
1995	12,849	2005	17,197	2015	25,923
1996	12,616	2006	18,310	2016	17,617
1997	13,726	2007	19,375	2017	17,932
1998	11,843	2008	16,306	2018	16,069

TABLE 5: NEW HOME COMPLETIONS IN LONDON

YEAR	VOLUME	YEAR	VOLUME	YEAR	VOLUME
1989	16,614	1999	11,709	2009	15,840
1990	12,459	2000	12,931	2010	11,701
1991	10,783	2001	11,975	2011	14,523
1992	12,045	2002	15,020	2012	18,478
1993	13,427	2003	15,485	2013	15,406
1994	14,413	2004	17,054	2014	18,456
1995	16,998	2005	15,176	2015	22,785
1996	13,131	2006	17,583	2016	21,549
1997	11,728	2007	17,550	2017	22,032
1998	12,024	2008	17,469	2018	18,875

NOTES

- 1) The figures show new build (and Solo for Self Build homes prior to October 2015) registered and completed for NHBC's ten-year warranty.
- 2) 'Completions' relate to the number of homes 'finalled' by NHBC Building Inspectors and changes can occur between figures published at different times.
- 3) The figures are sourced from information held on NHBC's Fusion system as at 31st December 2018.
- 4) Nationally NHBC provides warranties on approximately 80% of new homes built in the UK (including the Isle of Man).
- 5) Changes can occur between figures published at different times owing to changes in policies and cancellations.

Appendices (Continued)

TABLE 6: NEW HOME REGISTRATIONS - PRIVATE AND AFFORDABLE SECTOR

YEAR	PRIVATE	AFFORDABLE	TOTAL
1997	151,503	13,883	165,386
1998	141,558	16,410	157,968
1999	144,248	16,966	161,214
2000	143,644	13,805	157,449
2001	141,718	14,252	155,970
2002	156,189	16,219	172,408
2003	159,821	19,163	178,984
2004	163,096	20,950	184,046
2005	149,128	29,923	179,051
2006	153,171	25,300	178,471
2007	160,132	38,621	198,753
2008	70,090	35,334	105,424
2009	56,604	32,256	88,860
2010	77,658	38,488	116,146
2011	79,071	37,244	116,315
2012	77,831	27,118	104,949
2013	97,956	37,087	135,043
2014	110,371	35,704	146,075
2015	117,555	38,021	155,576
2016	115,310	36,566	151,876
2017	118,372	42,024	160,396
2018	117,497	42,120	159,617

NOTES

- 1) The figures show new build (and Solo for Self Build prior to October 2015) homes registered for NHBC's ten-year warranty
- 2) Nationally NHBC provides warranties on approximately 80% of new homes built in the UK (including the Isle of Man)
- 3) The figures are sourced from information held on NHBC's Fusion system as at 31st December 2018
- 4) Changes can occur between figures published at different times owing to changes in policies and cancellations

Appendices (Continued)

TABLE 7: UK HOUSE TYPES - REGISTRATIONS

	DETACHED HOUSES	BUNGALOWS	SEMI-DETACHED HOUSES	TERRACED HOUSES	APARTMENTS
1989	32%	14%	14%	16%	24%
1990	31%	11%	16%	19%	23%
1991	32%	10%	18%	20%	20%
1992	28%	9%	20%	23%	20%
1993	31%	8%	22%	22%	17%
1994	38%	7%	20%	18%	17%
1995	44%	7%	18%	15%	16%
1996	39%	7%	22%	17%	15%
1997	43%	7%	20%	15%	15%
1998	43%	7%	19%	15%	16%
1999	44%	6%	18%	15%	17%
2000	42%	6%	15%	15%	22%
2001	39%	4%	15%	17%	25%
2002	35%	4%	14%	17%	30%
2003	29%	4%	14%	18%	35%
2004	25%	3%	14%	17%	41%
2005	21%	2%	15%	18%	44%
2006	20%	2%	14%	18%	46%
2007	18%	2%	14%	21%	45%
2008	16%	2%	14%	20%	48%
2009	17%	3%	18%	24%	38%
2010	18%	2%	19%	24%	37%
2011	20%	2%	18%	21%	39%
2012	23%	2%	20%	23%	32%
2013	23%	2%	21%	20%	34%
2014	26%	1%	22%	18%	33%
2015	27%	2%	22%	17%	32%
2016	30%	1%	26%	17%	26%
2017	30%	2%	26%	16%	26%
2018	31%	2%	27%	15%	25%

NOTES

- 1) The figures show new build (and Solo for Self Build prior to October 2015) homes registered for NHBC's ten-year warranty
- 2) Nationally NHBC provides warranties on approximately 80% of new homes built in the UK (including the Isle of Man)
- 3) The figures are sourced from information held on NHBC's Fusion system as at 31st December 2018
- 4) Changes can occur between figures published at different times owing to changes in policies and cancellations